

FLOORPLANS



UNIT 1

Living Area

138.58 m²

Balcony/Courtyard

25 m²

Bed

3

Bath

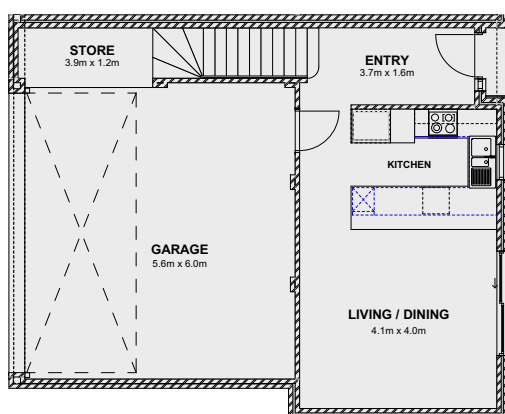
2

Garage/Carport

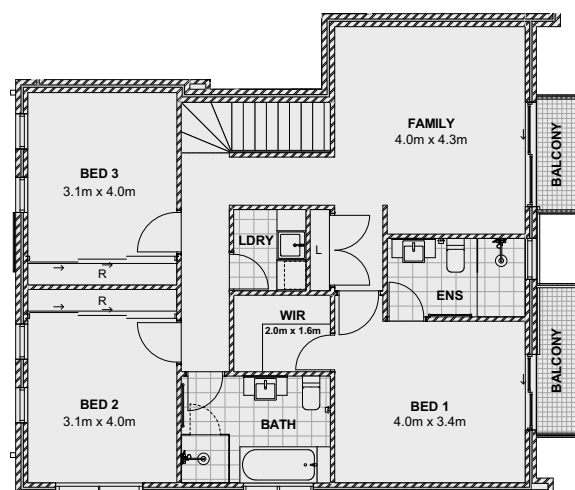
32.55 m²

Store

4 m²



Ground Floor Plan



First Floor Plan

UNIT 2

Living Area

133.46 m²

Balcony/Courtyard

29 m²

Bed

3

Bath

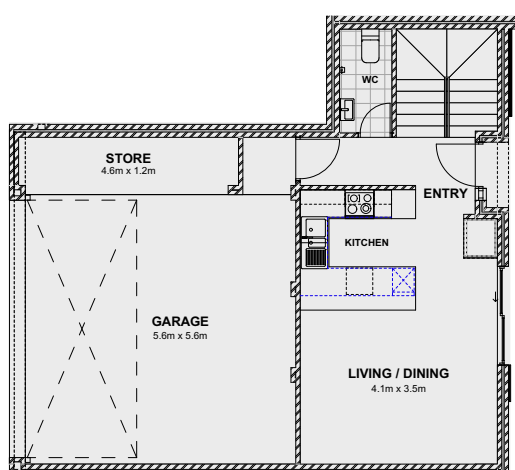
2

Garage/Carport

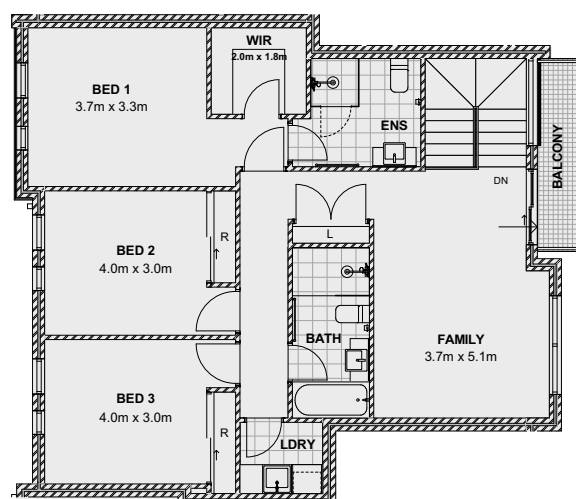
32.55 m²

Store

5 m²



Ground Floor Plan

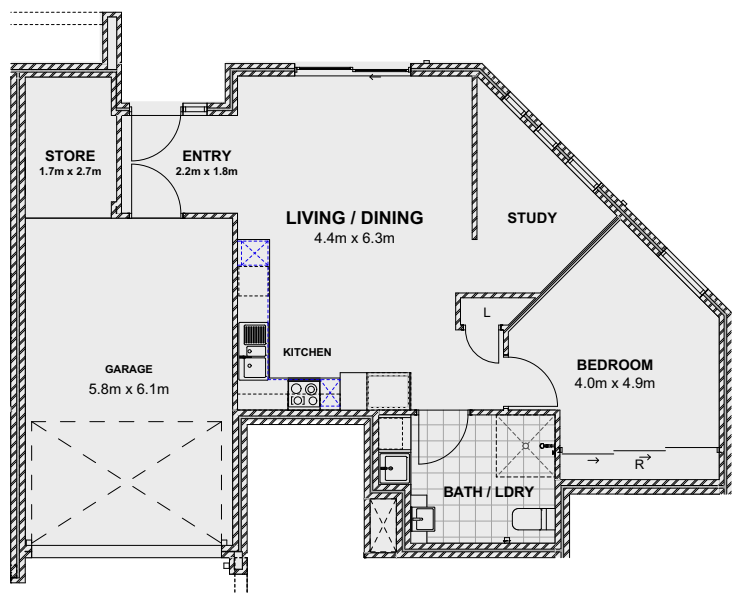


First Floor Plan

FLOORPLANS

UNIT 3

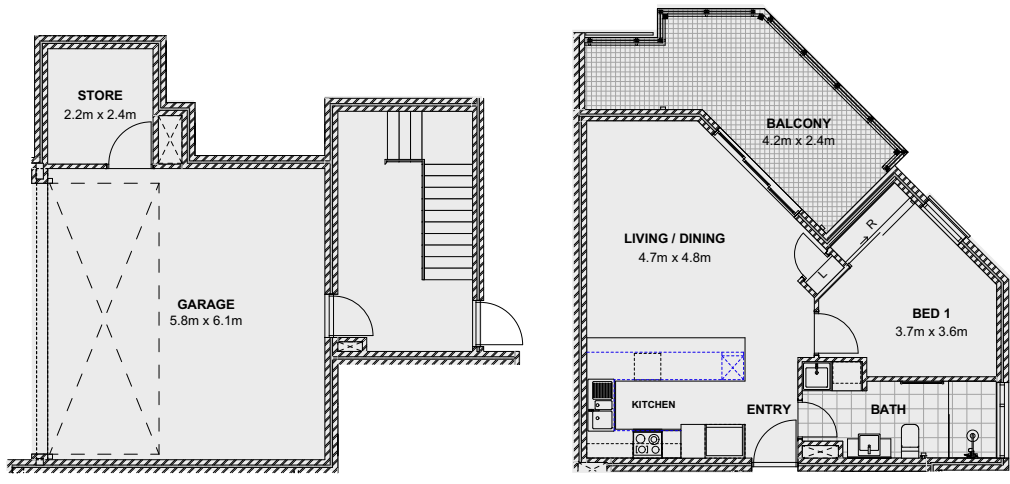
Living Area	71.86 m ²
Balcony/Courtyard	69 m ²
Bed	1
Study	1
Bath	1
Garage/Carport	23 m ²
Store	4 m ²



Ground Floor Plan

UNIT 4

Living Area	54.05 m ²
Balcony/Courtyard	15 m ²
Bed	1
Bath	1
Garage/Carport	16 m ²
Store	5 m ²



Ground Floor Plan

First Floor Plan

UNIT 5

Living Area

58.27 m²

Balcony/Courtyard

10 m²

Bed

1

Bath

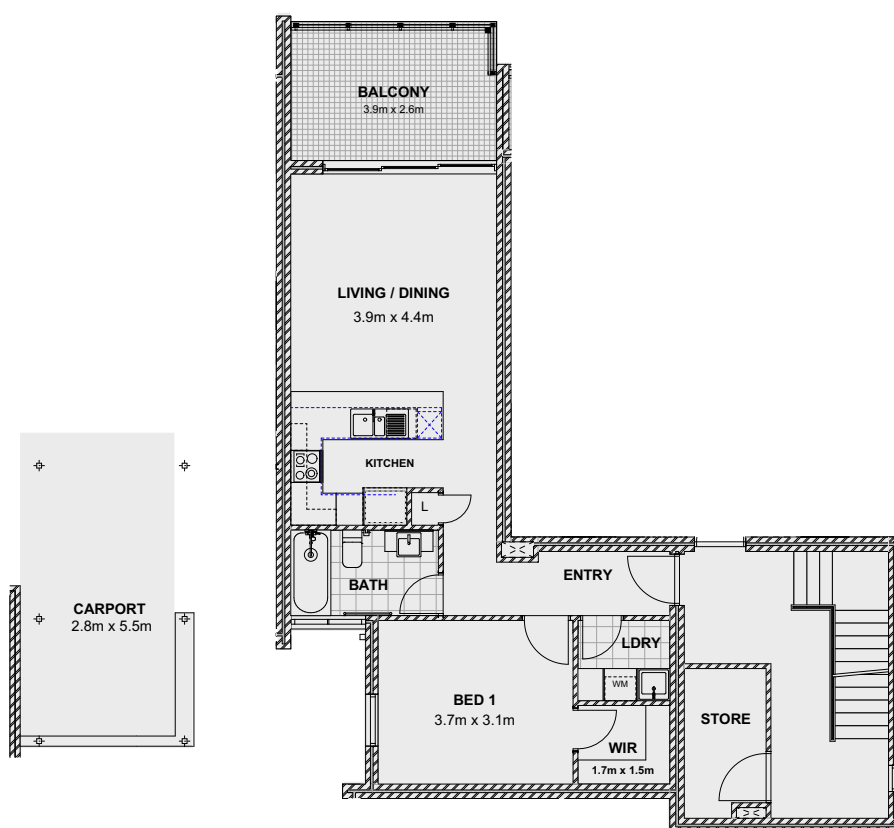
1

Garage/Carport

17.11 m²

Store

4 m²



Ground Floor Plan

First Floor Plan

UNIT 6

Living Area

109.12 m²

Balcony/Courtyard

25.37 m²

Bed

2

Study

1

Bath

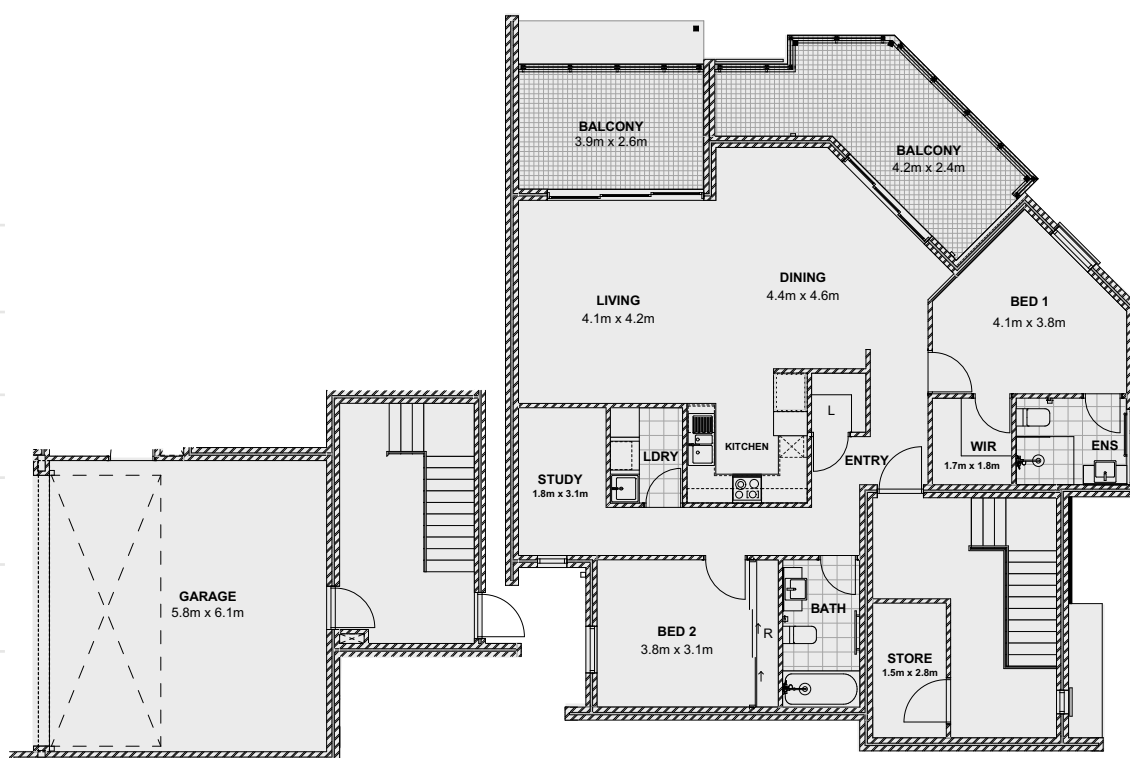
2

Garage/Carport

13 m²

Store

6 m²



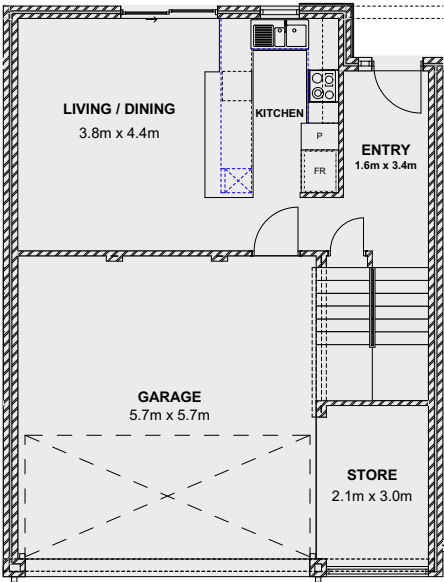
Ground Floor Plan

First Floor Plan

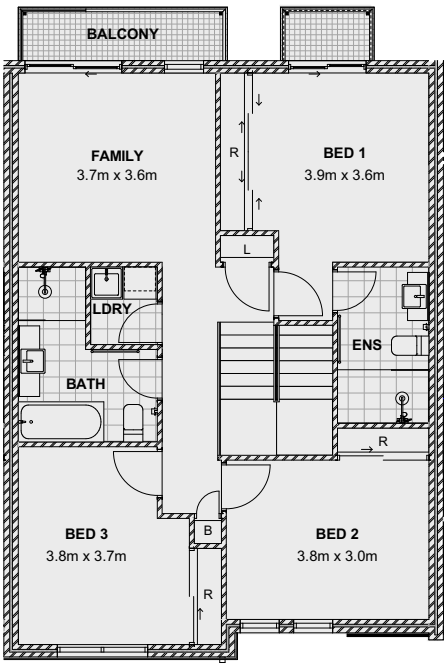
FLOORPLANS

UNIT 7 & 9

Living Area	125.29 m ²
Balcony/Courtyard	32 m ²
Bed	3
Bath	2
Garage/Carport	34.16 m ²
Store	6 m ²



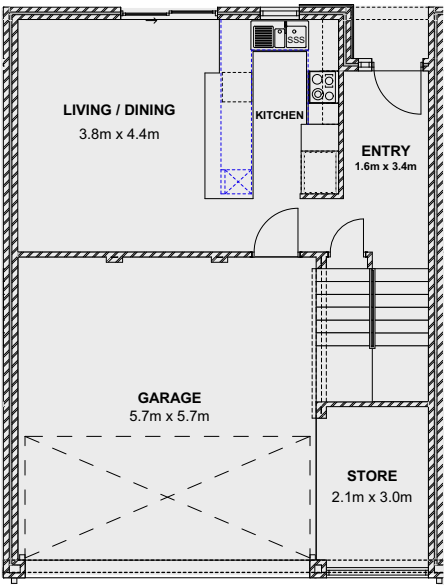
Ground Floor Plan



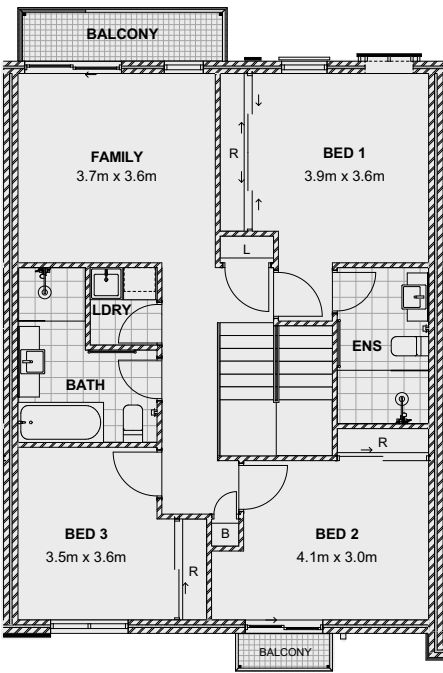
First Floor Plan

UNIT 8 & 10

Living Area	123.7 m ²
Balcony/Courtyard	25 m ²
Bed	3
Bath	2
Garage/Carport	34.16 m ²
Store	6 m ²



Ground Floor Plan



First Floor Plan

UNIT 11

Living Area

150.3 m²

Balcony/Courtyard

32 m²

Bed

3

Study

1

Bath

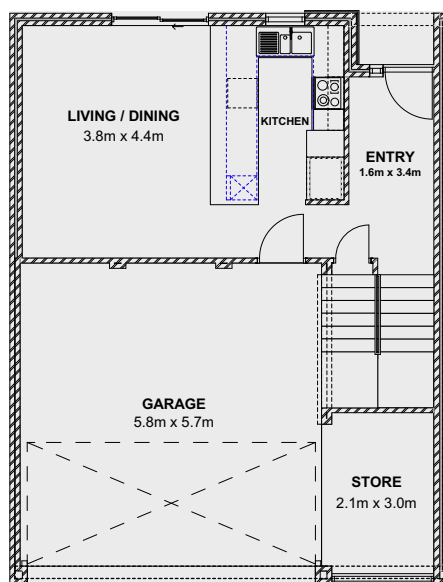
2

Garage/Carport

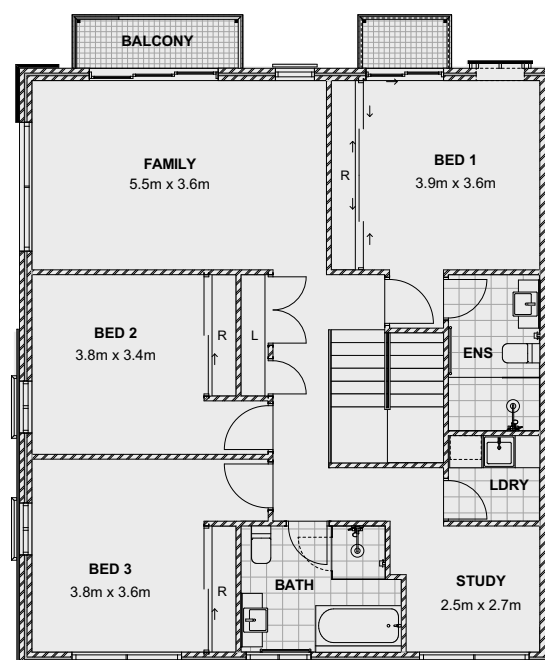
34.16 m²

Store

6 m²



Ground Floor Plan



First Floor Plan

UNIT 12

Living Area

137.55 m²

Balcony/Courtyard

47 m²

Bed

3

Bath

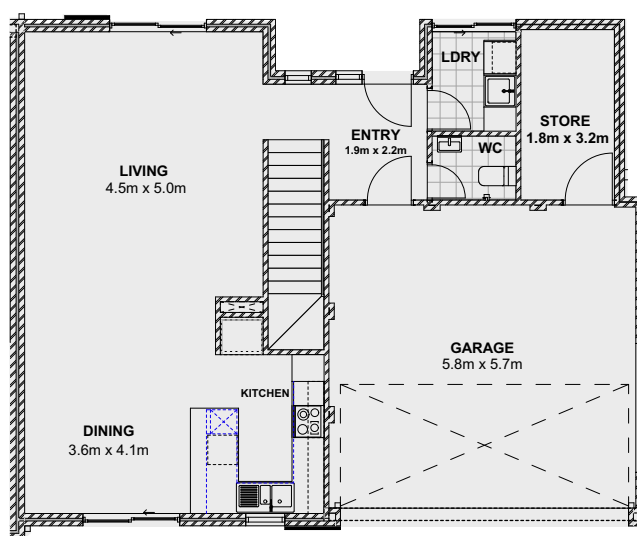
2

Garage/Carport

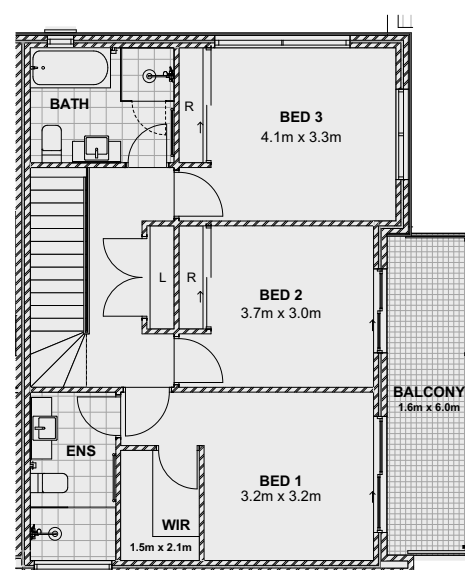
31.53 m²

Store

5 m²



Ground Floor Plan

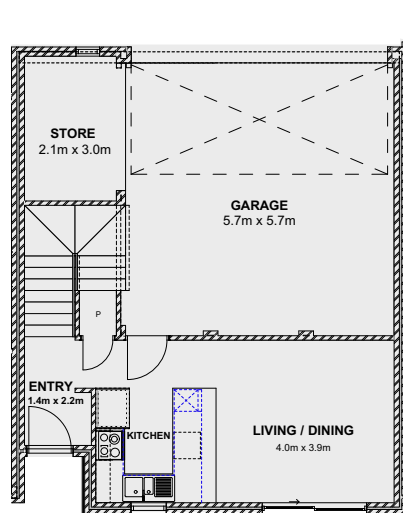


First Floor Plan

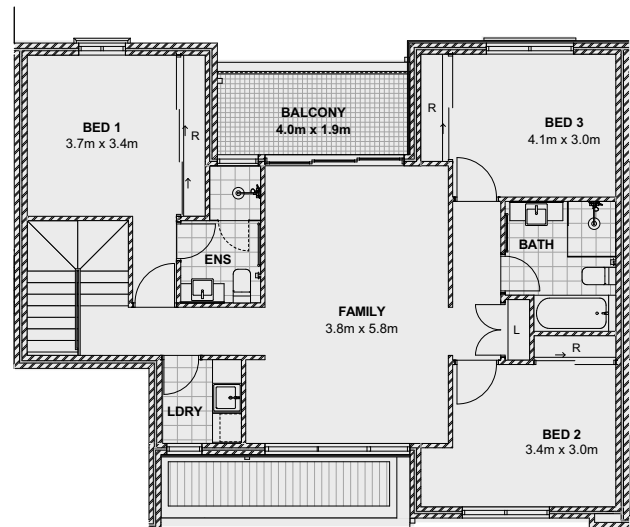
FLOORPLANS

UNIT 13

Living Area	127.51 m ²
Balcony/Courtyard	28 m ²
Bed	3
Bath	2
Garage/Carport	33.9 m ²
Store	6 m ²



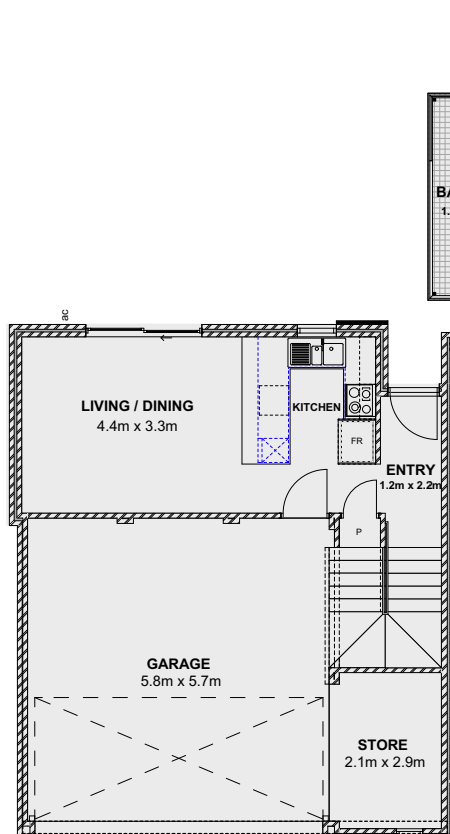
Ground Floor Plan



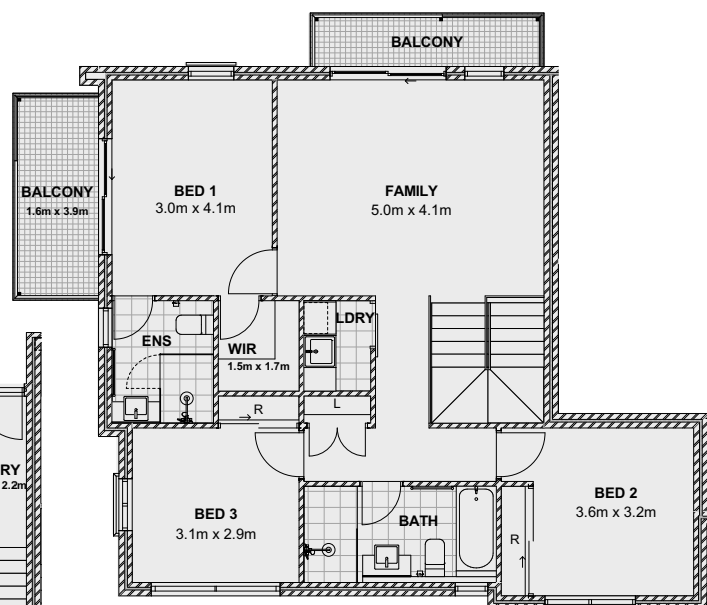
First Floor Plan

UNIT 14

Living Area	125.46 m ²
Balcony/Courtyard	29 m ²
Bed	3
Bath	2
Garage/Carport	34.17 m ²
Store	6 m ²



Ground Floor Plan



First Floor Plan

UNIT 15

Living Area

151.3 m²

Balcony/Courtyard

38 m²

Bed

3

Bath

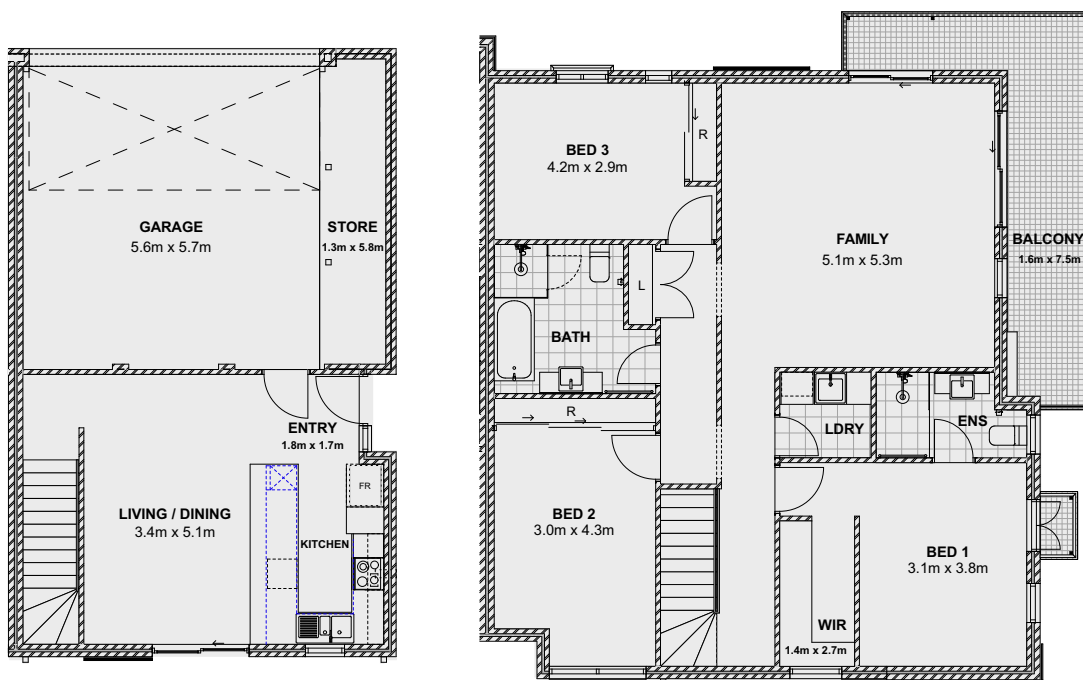
2

Garage/Carport

32.71 m²

Store

6 m²



Ground Floor Plan

First Floor Plan

UNIT 16 & 17

Living Area

129.33 m²

Balcony/Courtyard

24 m²

Bed

3

Bath

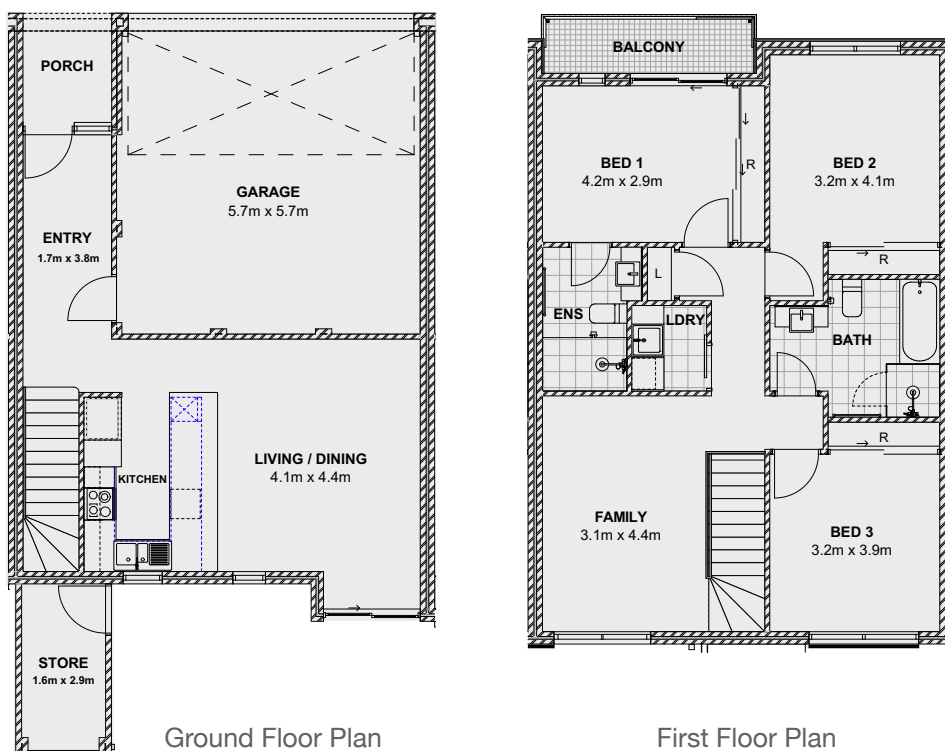
2

Garage/Carport

31.53 m²

Store

5 m²



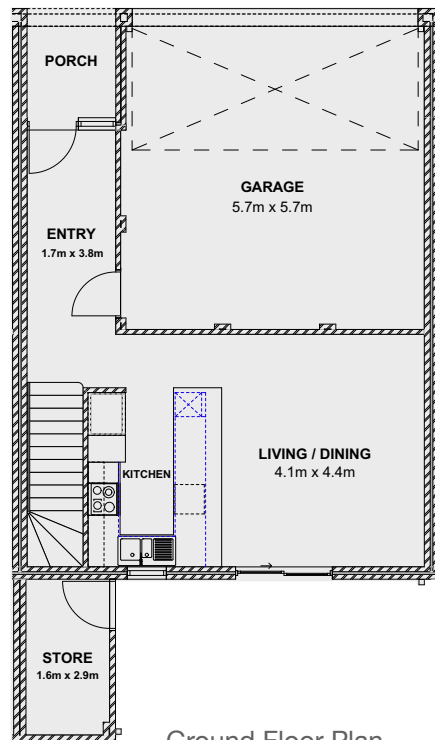
Ground Floor Plan

First Floor Plan

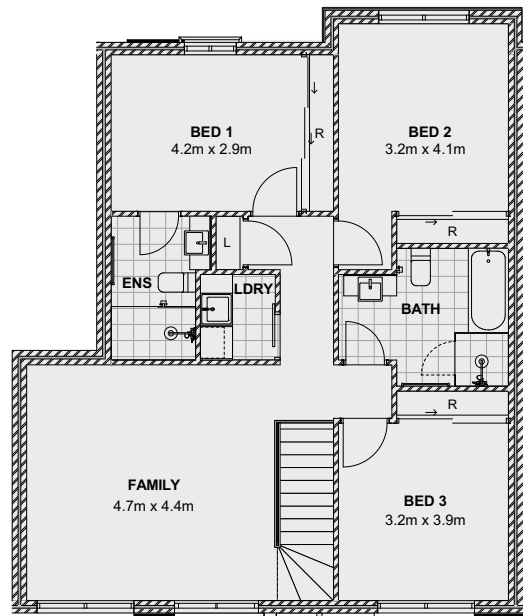
FLOORPLANS

UNIT 18

Living Area	135.35 m ²
Balcony/Courtyard	18.2 m ²
Bed	3
Bath	2
Garage/Carport	31.53 m ²
Store	5 m ²



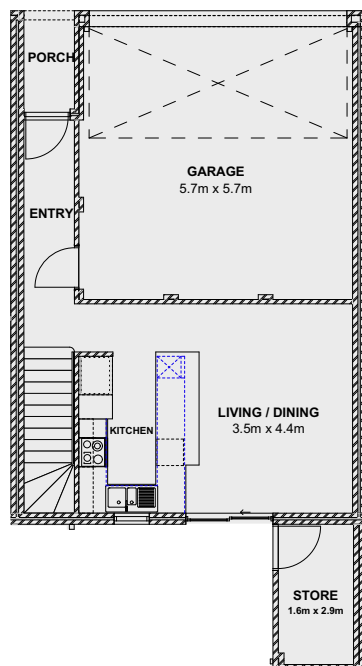
Ground Floor Plan



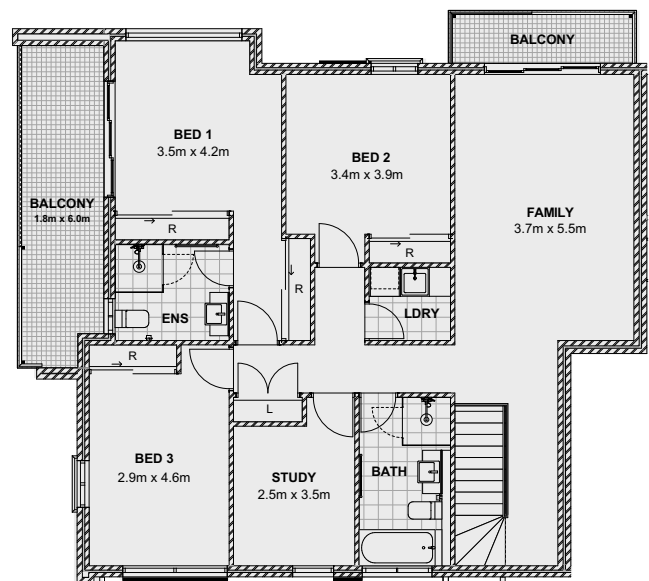
First Floor Plan

UNIT 19

Living Area	155.06 m ²
Balcony/Courtyard	31 m ²
Bed	3
Study	1
Bath	2
Garage/Carport	31.58 m ²
Store	5 m ²



Ground Floor Plan



First Floor Plan

UNIT 20

Living Area

65.95 m²

Balcony/Courtyard

15.3 m²

Bed

1

Bath

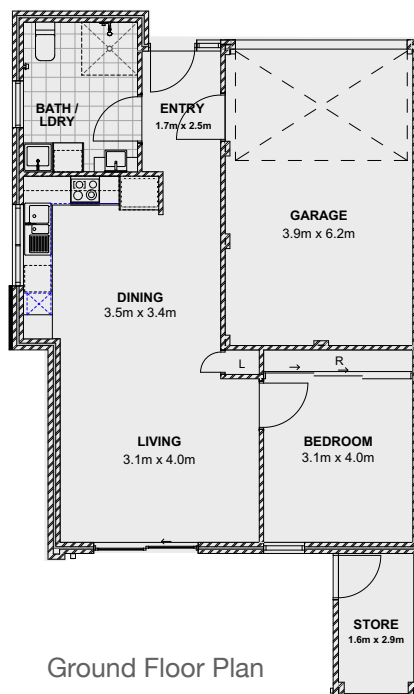
1

Garage/Carport

22.8 m²

Store

5 m²



Ground Floor Plan

SPECIFICATIONS

INTERIORS

KITCHEN

Bench-top	Engineered stone top to selected surfaces with 40mm square edge
Cabinets and Doors	Laminate finish to base and overhead units – all doors with soft closers
Pantry	Laminate finish with shelves
Drawers	Cutlery, utility and pot drawers with soft closers
Cooktop	Bosch stainless steel 600mm gas cooktop
Oven	Bosch stainless steel 600mm multi-function oven
Rangehood	Bosch stainless steel 600mm ducted built-in above hob
Dishwasher	Bosch Stainless Steel
Splashbacks	Ceramic tiles
Sinks	Stainless steel

BATHROOM / ENSUITE / LAUNDRY

Vanity	Timberline Carlo vanity with ceramic top and basin or similar
Mirrors	Frameless above vanities
Shower screens	Semi-frameless clear glass
Shower tapware	Chrome mixer tap with shower on rail
Laundry	Stainless steel inset/vitreous china
Toilets	White vitreous china close-coupled suite
Tapware	Flickmixers throughout
Accessories	Brushed stainless steel toilet roll holder and towel rails
Wall Tiles	Full height tiling

GENERAL

Hot-Water System	Gas instantaneous
Bedroom robes	Mirror & vinyl sliding doors Shelf and rail at 1800mm above floor level and some double hanging
Linen Cupboards	With laminate shelving
Dryer/Clothes Lines	Included
Floor Finishes	Quality carpet to bedrooms/upper floor/stairs Polyflor vinyl timber or similar approved product to kitchen and entry Ceramic tiles to bathrooms & laundries

ELECTRICAL SERVICES

Exhaust Fans	Ducted from bathrooms and ensuites
Telephone Points	Provided to Living
Television Points	Provided to Living and Master Bedroom
Air conditioning	Ducted reverse cycle airconditioning to upper level and split system to lower levels
Power	All double GPO outlets with RCD protection LED lighting where possible throughout Solar cells to rooftop for house services
Security	Voice intercom and remote gate release
Smoke Alarms	Hard wired smoke detectors

INTERNAL CONSTRUCTION

Party Walls	Plastered double brick/concrete
Internal Walls	Plastered brick
Wet-Area Walls	Plastered brick/concrete
Skirtings	Painted 90mm MDF
Ceilings & Bulkheads	Generally 2560 high painted flush plasterboard
Cornices	70mm Coved
Front Doors	Painted solid core with security lock and turn-snob
Internal Doors	Painted flush panel
Car-Parking	Lock-up garage and undercover bay

EXTERNAL CONSTRUCTION (ALL APARTMENTS)

External Walls	Combination of render and face brickwork Reverse brick veneer with light weight cladding
Windows & Sliding Patio Doors	Clear aluminium windows and sliding doors where applicable Obscured Glass windows to bathrooms Flyscreens to all operable windows and sliding doors
Footings & Floor Slabs	Insitu reinforced concrete
Roofs	Colorbond metal-deck roofing with anti-con insulation
Balcony Balustrading	Powder-coated aluminium
Walkway Balustrading	Powder-coated aluminium
Balcony Floor Finish	Slip resistant tiles
Stairwell Floor Finish	Textured granolithic concrete or slip resistant tiles
Letterboxes	Numbered and locking
External Lighting	LED light fittings
Gates	Framed powder-coated metal Auto



MODE



FINI DEVELOPMENTS

Adding the extras _____

www.finidevelopments.com.au