

henley  
ON PARK

*Apartment floorplans*

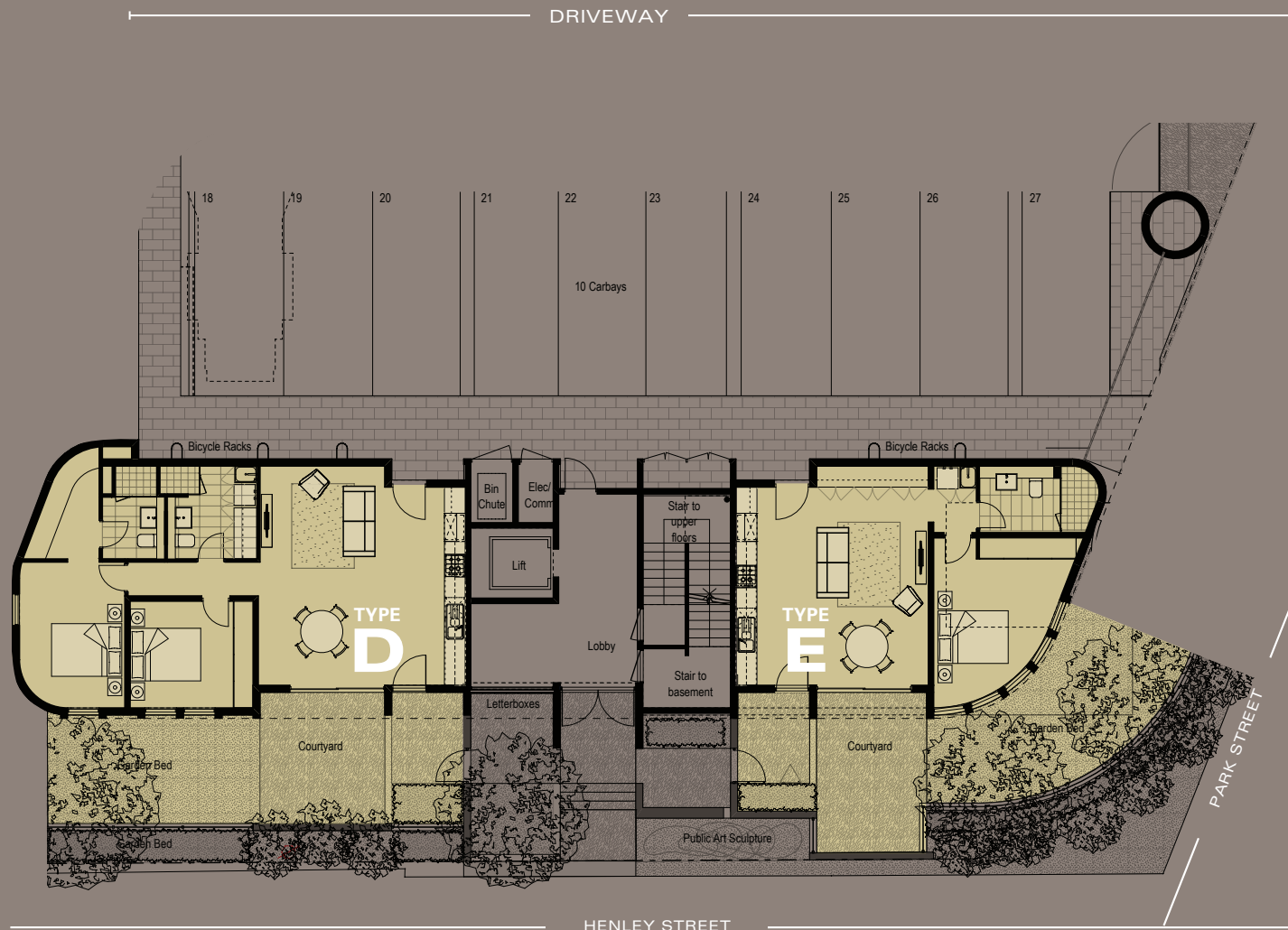


BASEMENT LEVEL



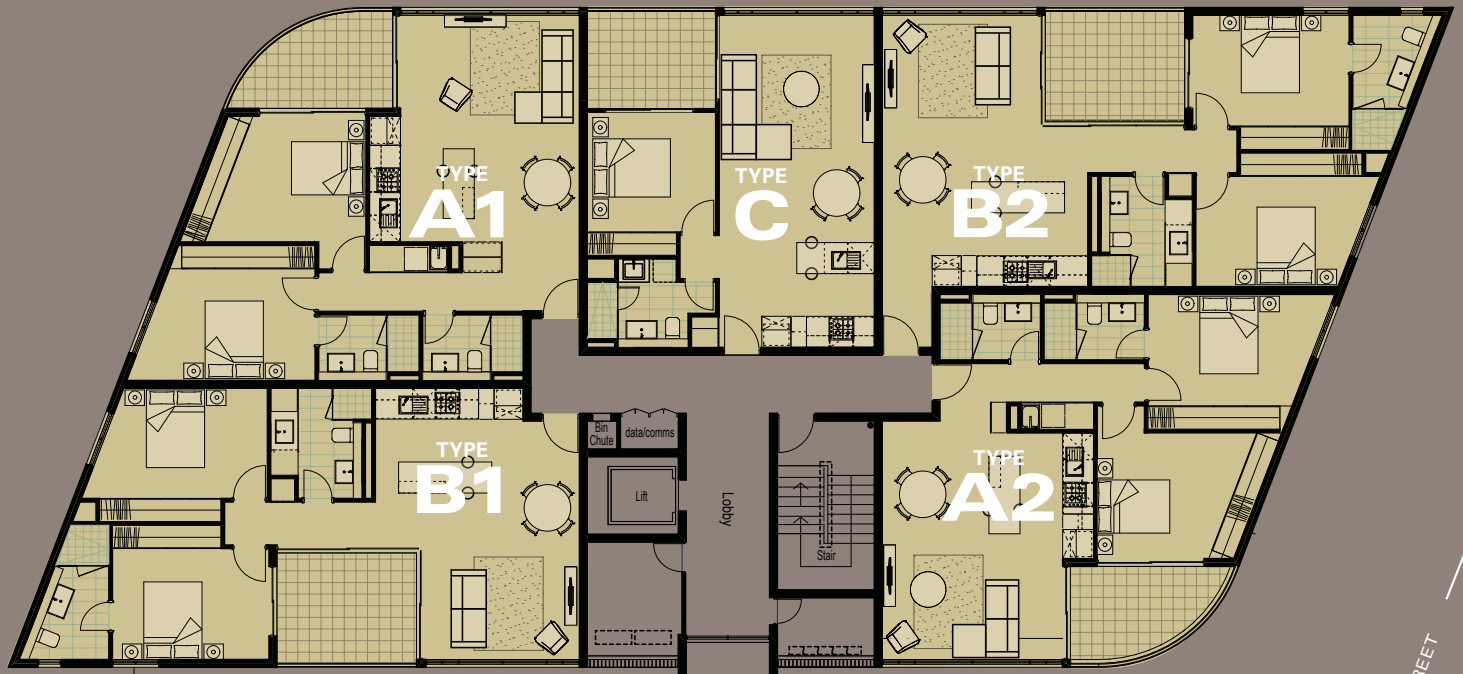


## GROUND LEVEL





LEVELS ONE TO FIVE

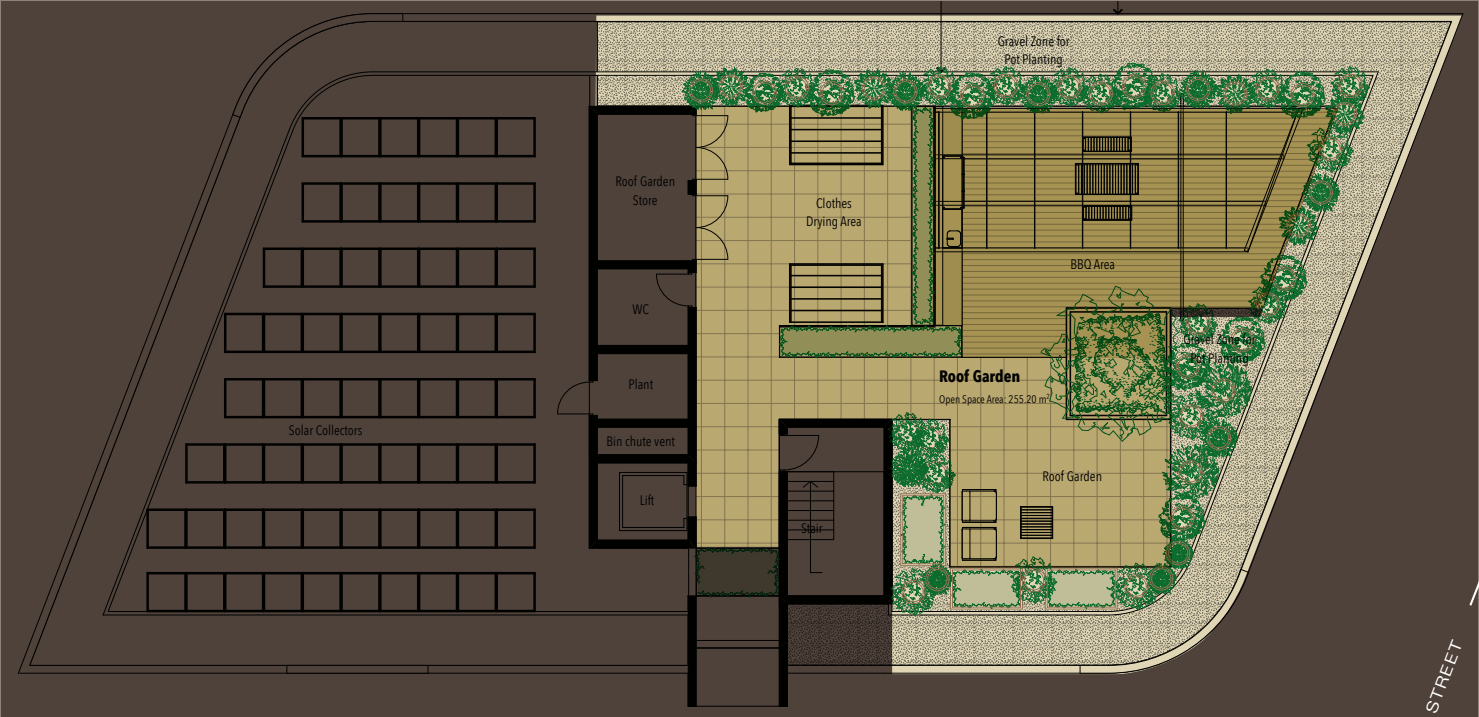


HENLEY STREET

PARK STREET



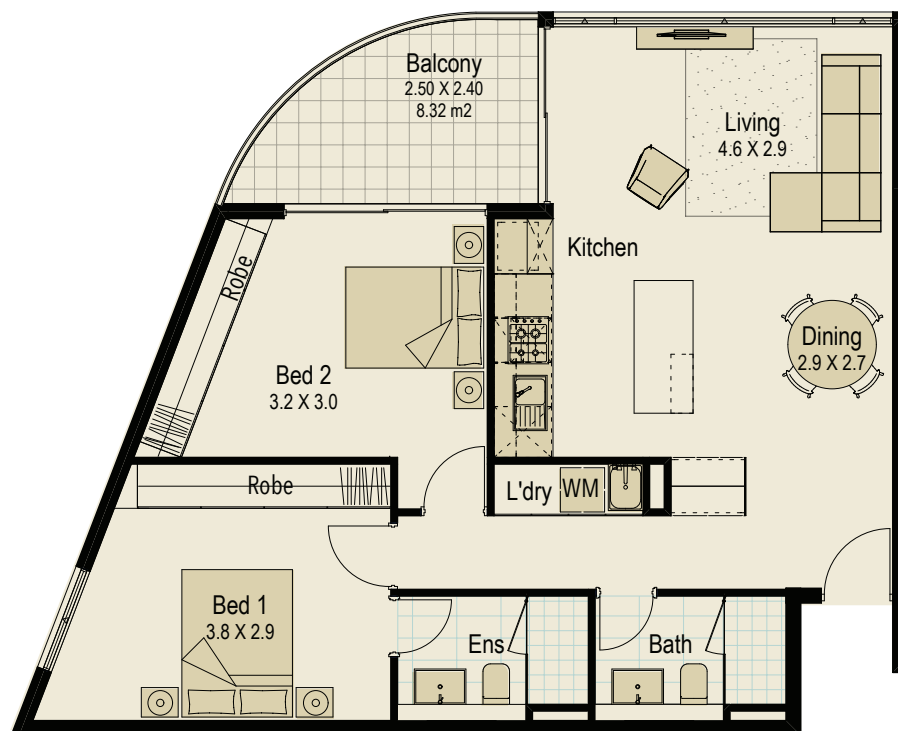
ROOFTOP LEVEL





## APARTMENT TYPE

# A1



APARTMENT NO. **4, 9, 14, 19, 24**

TOTAL AREA **80 m<sup>2</sup>**

BEDROOMS **2**

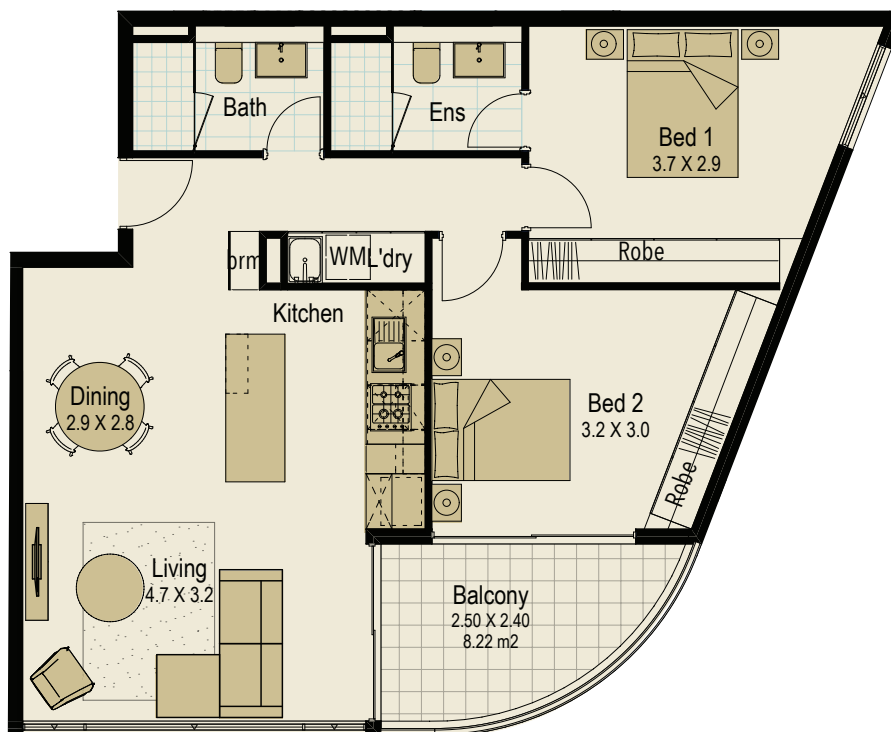
BATHROOMS **2**

BALCONY AREA **8.32 m<sup>2</sup>**



## APARTMENT TYPE

# A2



APARTMENT NO. **7, 12, 17, 22, 27**

TOTAL AREA **77.40 m<sup>2</sup>**

BEDROOMS **2**

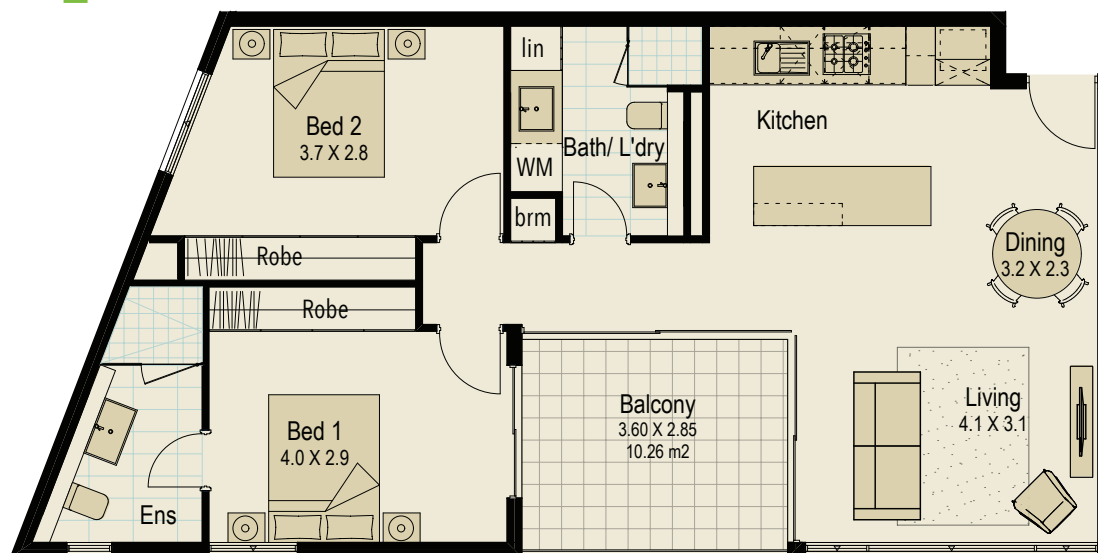
BATHROOMS **2**

BALCONY AREA **8.22 m<sup>2</sup>**



## APARTMENT TYPE

# B1



APARTMENT NO. **3, 8, 13, 18, 23**

TOTAL AREA **77.7 m<sup>2</sup>**

BEDROOMS **2**

BATHROOMS **2**

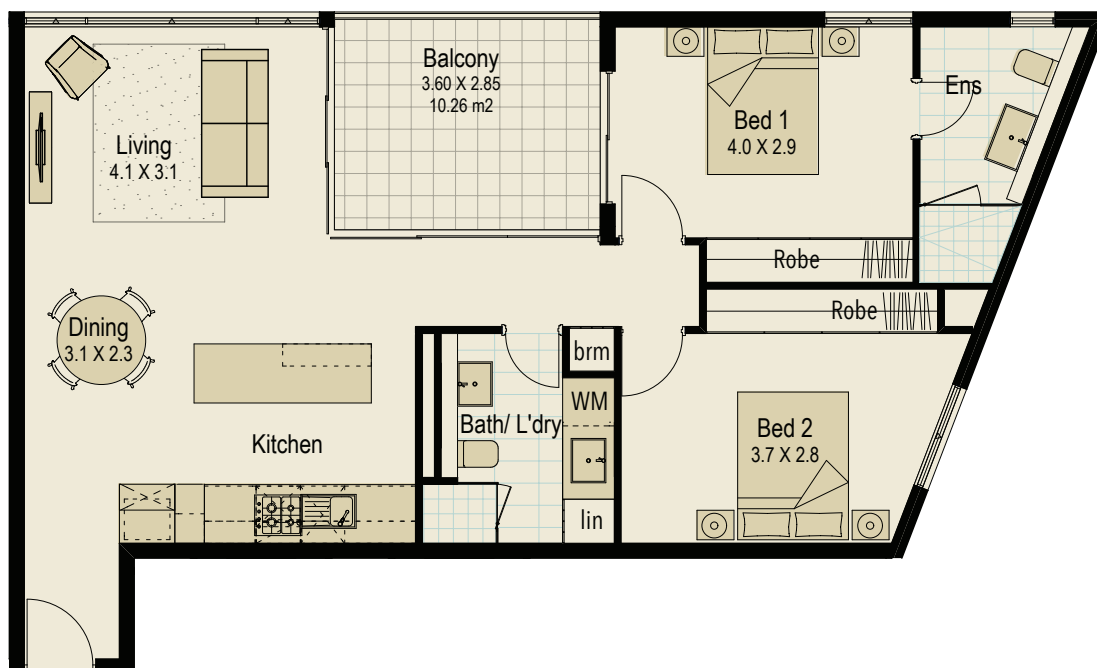
BALCONY AREA **10.26 m<sup>2</sup>**





## APARTMENT TYPE

# B2



APARTMENT NO. **6, 11, 16, 21, 26**

TOTAL AREA **81 m<sup>2</sup>**

BEDROOMS **2**

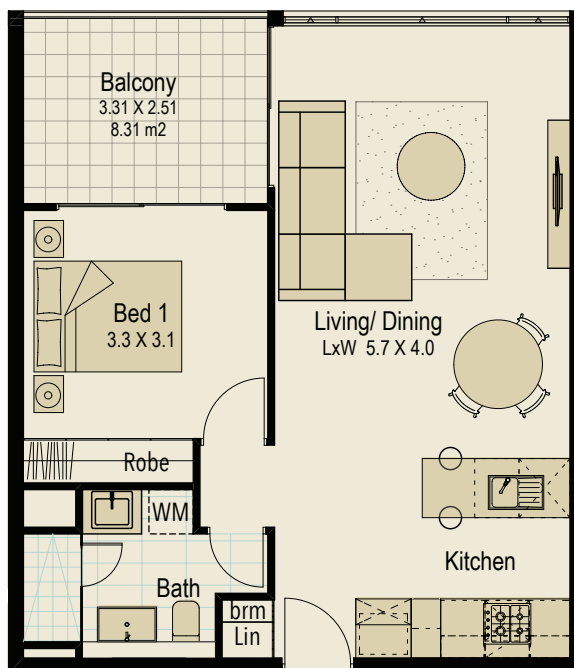
BATHROOMS **2**

BALCONY AREA **10.26 m<sup>2</sup>**



## APARTMENT TYPE

# C



APARTMENT NO. **5, 10, 15, 20, 25**

TOTAL AREA **54.2 m2**

BEDROOMS **1**

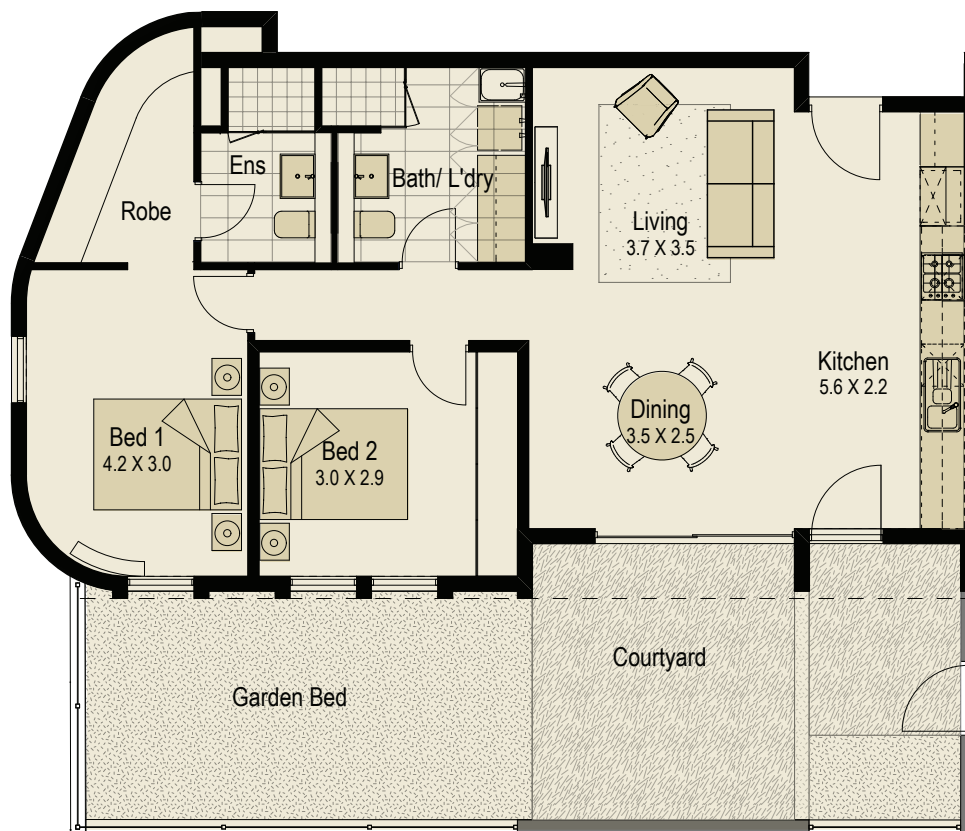
BATHROOMS **1**

BALCONY AREA **8.31 m2**



## APARTMENT TYPE

# D



APARTMENT NO. **1**

TOTAL AREA **80 m<sup>2</sup>**

BEDROOMS **2**

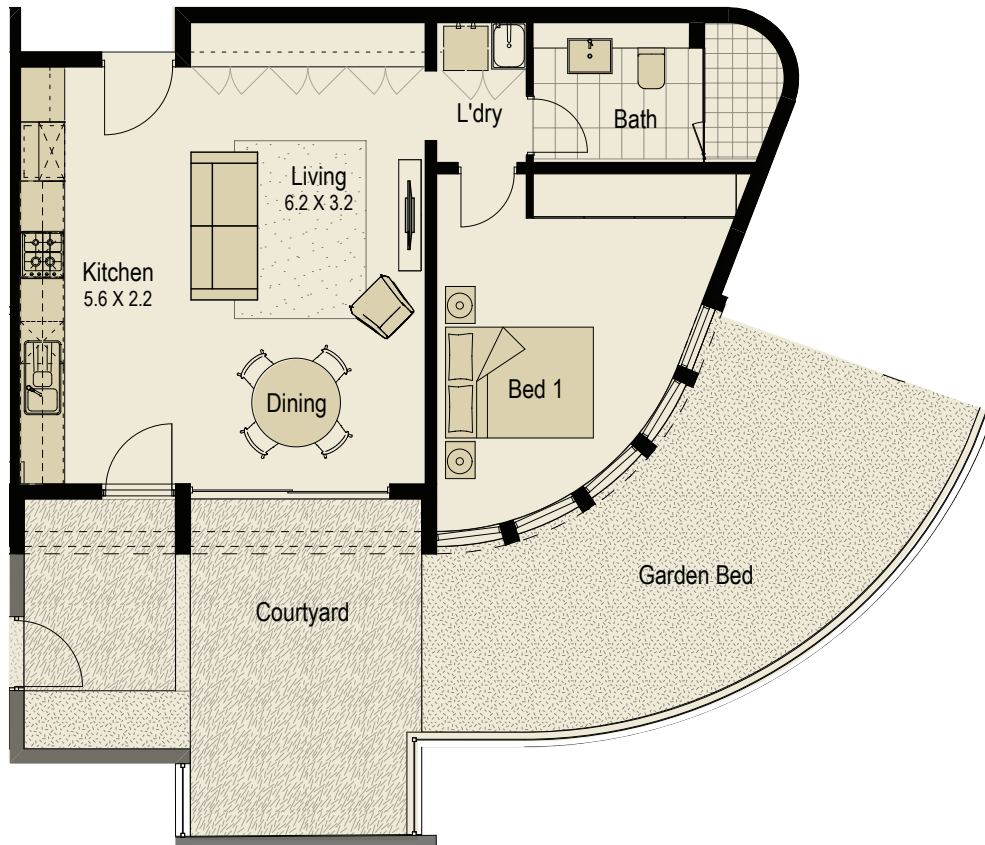
BATHROOMS **2**

EXTERNAL STRATA AREA **40.4 m<sup>2</sup>**



## APARTMENT TYPE

# E



APARTMENT NO. **2**

TOTAL AREA **57.5 m<sup>2</sup>**

BEDROOMS **1**

BATHROOMS **1**

EXTERNAL STRATA AREA **46 m<sup>2</sup>**

# Specifications

## INTERIORS

### KITCHEN

#### Bench-top

A combination of engineered stone and composite laminate to work surfaces

#### Cabinets

Selected laminate finish to base and overhead cupboards

#### Cupboard doors

Selected laminate finish to base and overhead cupboards

#### Pantry

Selected laminate finish as per plans with shelves

#### Drawers

Cutlery, utility and pot drawers with soft closers

#### Cooktop

Bosch stainless steel 600mm gas cooktop

#### Oven

Bosch stainless steel 600mm 8 function oven

#### Rangehood

Bosch stainless steel 600mm ducted built-in above hob

#### Dishwasher

Bosch

#### Splashbacks

Mirrored glass

#### Sinks

Stainless steel

### BATHROOM/ENSUITE/LAUNDRY

#### Vanity/Basin

Porcelain wall hung basin with overhead mirrored cabinets

#### Shower screens

Semi-frameless clear safety glass to code

#### Shower tapware

Chrome mixer tap with shower on rail

#### Laundry

Stainless steel inset

#### Toilets

White vitreous china

#### Tapware

Flickmixers throughout

#### Accessories

Chrome toilet roll holder and towel rails

#### Wall Tiles

Full height

### GENERAL

#### Hot-Water System

Gas instantaneous

#### Bedroom robes

Mirrored sliding doors

Shelf and rail at 1800 above floor level

#### Linen Cupboards

Linen/Broom with shelving

#### Floor Finishes

Timber floor to hallways, entries, kitchen/ living areas

Quality carpet to bedrooms

Ceramic/porcelain tiles to bathrooms and laundry

### ELECTRICAL SERVICES

#### In Line Exhaust Fans

Ducted from bathrooms and ensuites

#### Telephone and Internet Connections

NBN Network

### Television

Provided to Living and Master Bedroom

### Air conditioning

Reverse cycle air-conditioning to all living and bedroom zones

### Power

All double GPO outlets with RCD protection

LED lighting where possible throughout

### Security

Video intercom and remote gate release

### Smoke Alarms

Hard wired smoke detectors

## INTERNAL CONSTRUCTION

### PARTY WALLS

Plaster and painted concrete or brick

### INTERNAL WALLS

Plasterboard lining

### SKIRTINGS

Painted MDF

### CEILINGS & BULKHEADS

Generally 2600mm high painted flush plasterboard, except to wet areas

### CORNICES

Included

### FRONT DOORS

Painted solid core with security lock and turn-snob

### INTERNAL DOORS

Painted flush panel

### CAR-PARKING

One car bay per apartment

henley  
— ON PARK

Imagine the serenity



fini  
DEVELOPMENTS

Adding  
the  
extras

**FINIDEVELOPMENTS.COM.AU**

